


ENOSERV

ENOSERV *Vector*™

Relay testing software to prove fault isolation schemes and User-defined logic with satellite-synchronized state sequencing

ENOSERV *Vector*™ will find potential failures in your system by enabling a holistic view of relay performance that can't be attained with functional testing alone.

Within a clear and flexible interface, ENOSERV *Vector*™ simulates complex mis-operations with definable events that technicians can easily establish. Any characteristic can be drawn quickly. Easily import fault simulation data from other software sources such as Aspen 1-Liner and SEL event reports. ENOSERV *Vector*™ will operate Doble, Manta, Megger & Omicron test sets.



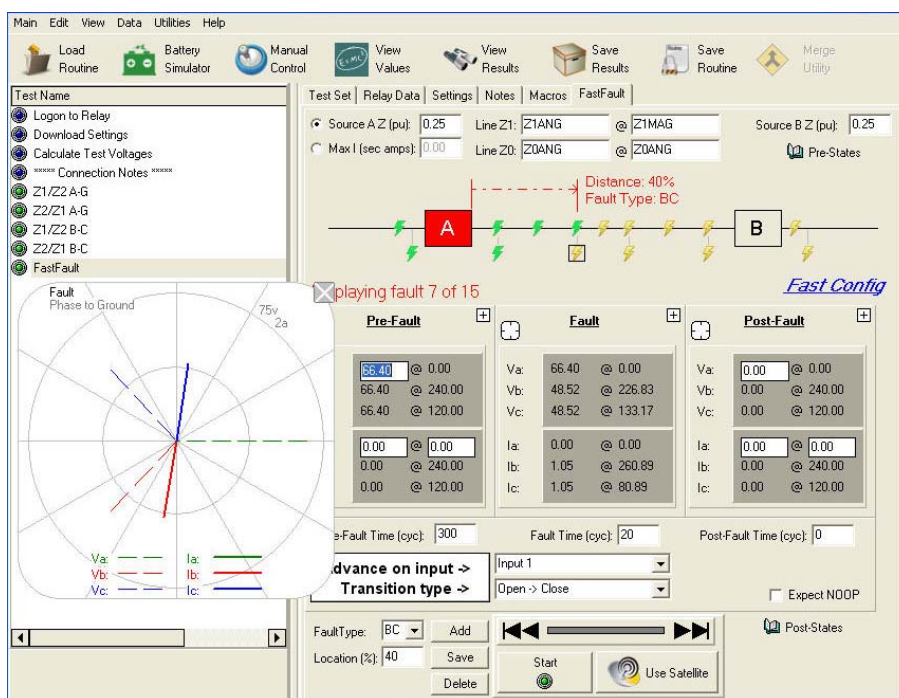
Automatically test on any point inside or outside a specific range of operation

Store and share test results and settings in ENOSERV *PowerBase*™

Draw mho circles, lines, quadrilaterals, tomatoes, lenses, or any User-defined characteristic

Use the intuitive *FastFault* user interface

- Provides instant extrapolation of phase-to-phase quantities as well as impedances, sequence components and power calculations.
- Configures default Input/Trigger configurations: configures the test set to advance to the post-fault state when it senses the TRIP or 52a operation.
- Calculates fault values from the relay's settings or other user-supplied line impedance data.
- Saves a constellation of fault types/distances as a default template which can be utilized in any new *FastFault* test.



Contact sales today! 918.622.4530

ENOSERV 7780 E. 106th Street, Tulsa, Oklahoma 74133 USA

Phone: +1 (918) 622-4530 Fax: +1 (918) 622-6569 sales@enoserv.com www.enoserv.com



A Better Use of your time

ENOSERV *Vector* 5
software

enables satellite synchronized
end-to-end relay testing and
multi-state dynamic testing
for advanced logic, panel,
and system testing