

ENOSERV *PowerBase*™

A relay settings lifecycle and relay test record database that imports/exports relay data with other testing and engineering applications

ENOSERV *PowerBase*™ will help your P&C workgroup collect and analyze relay information efficiently.

More than just storage... ENOSERV *PowerBase*™ is total relay data management. Imagine all relay maintenance records in one location with tools for converting relay data efficiently between applications used by engineering and field service workgroups. ENOSERV *PowerBase*™ will help P&C personnel gain control over all aspects of relay data, from engineering to the field and back. The lifecycle of all your relays is kept centrally—in one master database—helping you standardize your relay records management.

“Each operating company had their own testing procedures and we wanted to use PowerBase and RTS as the tools to bring the operating companies together. We now have all relays from all operating companies in one database...”

– Engineer
AmerenUE

Automate the exchange of critical relay information

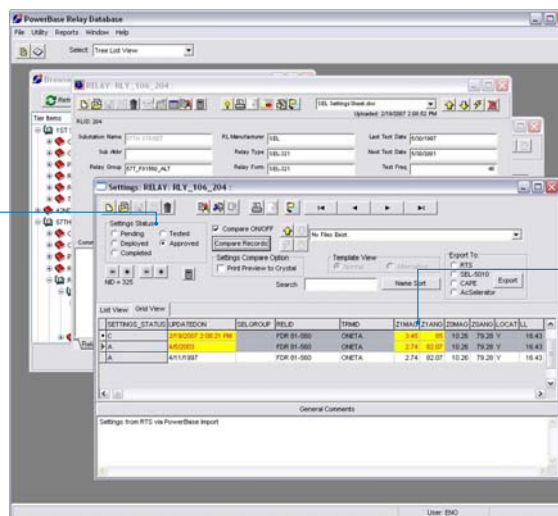
- ENOSERV *PowerBase*™ works with ENOSERV *RTS*™ to move settings and test results to and from the field electronically. The design of your protection system will be implemented and maintained by personnel working from one common source of information.

Manage Easily Accessible Records for a NERC or FERC Reporting Audit

Make sense of your relay data

- Build a centralized master repository that integrates into your workflow. Your P&C workgroup using ENOSERV *PowerBase*™ will accurately create testing cycles, quickly generate on-demand reporting and easily locate your most up-to-date settings records in the same place as the latest test results and comments.
- All relays—electromechanical as well as digital—will be stored, located, viewed, and edited—or created—in an identical fashion.
- Historical settings files and their associated test results are kept together in one view. Differences in lifecycle data highlight easily.
- A relay's legacy data can be imported, stored and accessed alongside its current data.

Classify settings based on their status



Easily compare different settings records

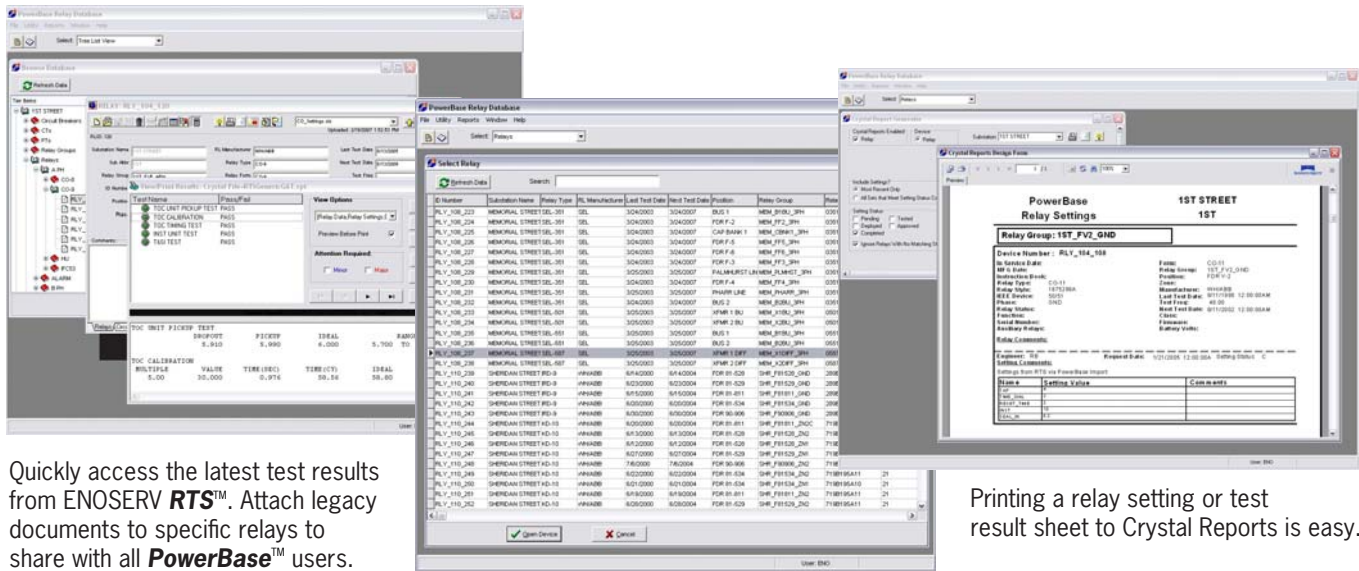
Contact sales today! 918.622.4530

ENOSERV 5630 S. Memorial, Tulsa, Oklahoma 74145 USA

Phone: +1 (918) 622-4530 Fax: +1 (918) 622-6569 sales@enoserv.com www.enoserv.com

Collect relay data accurately

By building data based on actual testing history information captured in the system, you can provide reports that investigating managers can rely on—and you can depend on—with ENOSERV **PowerBase™**.



Quickly access the latest test results from ENOSERV **RTS™**. Attach legacy documents to specific relays to share with all **PowerBase™** users.

Printing a relay setting or test result sheet to Crystal Reports is easy.

Highly customizable display options allow users to display and sort data according to their needs and preferences.

Key Features

Link Devices and Associated Data

ENOSERV **PowerBase™** provides a variety of ways to view relays, relay locations, relay groups, CT's, PT's, transformers, breakers, generators, transmission lines, switchgear and other devices.

Virtually Unlimited Space Allocation

Boundless disk space allocation removes any restrictions on number of records for all devices and their associated linked data in the system. Currently, some utilities store over 80,000 relays and all associated linked data in the system.

Powerful Search Engine

Database search engine is specifically designed to allow you to locate any device and accommodate virtually any scenario.

Trending Analysis and Predictive Maintenance Models

ENOSERV **PowerBase™** allows settings from SEL-5010, SEL-5030, GE UR, CAPE and settings/test results from ENOSERV **RTS™** to be imported and quickly loaded back into the database for trending analysis.

Easy Customization

Customization can take place to produce exact replicas of existing forms and reports so you can continue using standardized corporate forms, sheets and reports.

Effective Report Generator

Design includes column, row and field options as well as preview, print and print-to-file features. Export feature supports print, preview, pdf, wks, doc, html and a multitude of other formats.

Optional Converter Modules Available

Converter modules allow for legacy data transfer from: Access; Cape; Cascade; ASPEN Relay Database; Excel; Maximo; SAP and other commonly-used database formats.

System Requirements:

- ENOSERV **PowerBase™** is specifically designed for Oracle and Sybase servers and for PCs running Microsoft Windows NT, 2000 or XP.